

ARTICULIGHT

15-06 Morlot Avenue, Fair Lawn, NJ 07410 USA Tel: (201) 796-2690 Fax: (201) 796-8818

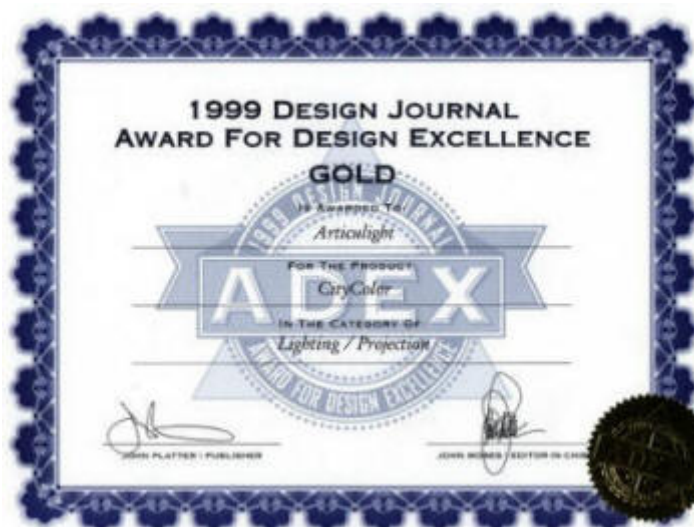
info@articulight.com

articulight@aol.com

www.articulight.com

ARCHITECTURAL COLOR CHANGERS

CITYCOLOR CC1800/C™
Architectural Color Changing Floodlight





The CITYCOLOR CC1800/C™ Model 0503 is the world's first state-of-the-art square projection high power floodlight with full field color changer. The main purpose which led to the creation of the CITYCOLOR CC1800/C™ has been the idea of creating light shades and colors on the external walls of buildings.

Furthermore, its indoor use for places like theaters or stages and concerts is also highly appreciated. CITYCOLOR CC1800/C™ high power floodlight with full field color changing, crossfades, dimming, preset programs and digital programming capabilities. The innovative CYM (Cyan, Yellow, Magenta) color changing system has true color dichroic filters to produce smooth color crossfades throughout the entire color spectrum.

CITYCOLOR CC1800/C™ unique coloring capabilities open up a lot of creative opportunities limited only by one's imagination.



The only condition for CITYCOLOR CC1800/C™ best chromatic performance is the projection onto preferably white or light colored walls. When in use its sequence of colors, which goes from pastel shades to bright colors, creates a chromatic atmosphere around the building and gives it an elegant or glamorous look.

The CITYCOLOR CC1800/C™ enables the designer to paint a subtle pastel wash or to create a constellation of vivid colors. The greatest beauty of the CITYCOLOR CC1800/C™ is the creative power it puts in your hand.

CITYCOLOR CC1800/C™ programmed color changing floodlighting to mark various holidays - red, white and blue for the fourth of July; red and green for Christmas; yellow, orange and white for Thanksgiving; different shades of green for St. Patrick's Day and various hues of pink for Valentine's Day - just to name a few - can surely create a positive reference of belonging and will invoke a warm feeling toward the lighted object and its surroundings.





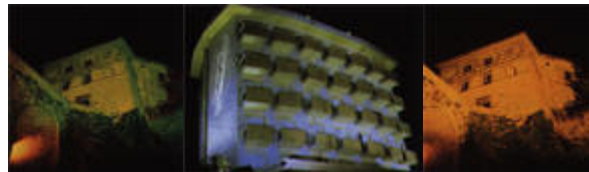
Architectural Color Changing Floodlight

Corporate identity can be dramatically enhanced by projecting the company's colors on its headquarters building. Entertainment and hospitality venues i.e. movie theaters, casinos, bowling centers and restaurants as well as retail establishments such as shopping malls and specialty stores can perfectly stand out in the highly crowded and extremely competitive scene of urban and suburban buildings by using the CITYCOLOR CC1800/C™ as an effective attention getter and visual reminder.

It reminds the passerby that those buildings not only exist but have become a focal point landmark. The CITYCOLOR CC1800/C™ is an important component in the branding process in that it enables the use of colors and motion to become a strong element of recognition of that particular site. By using the 64 already stored programs (the use of a controller is not necessary), one can obtain shades of two or more colors by passing, quickly or slowly, through all the intermediate positions.

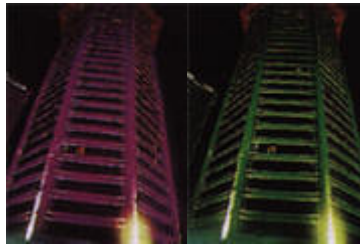


When using more than one fixture a simple connection will make them work in synchronization. The CITYCOLOR CC1800/C™ does not need any maintenance but the replacement of the lamps every 2,500 hours. The CITYCOLOR CC1800/C™ can be also used to light indoor or stages and theaters which in this case it can be driven by DMX with 7 channels.



Available Accessories:
Barn Doors to define the illuminated surface



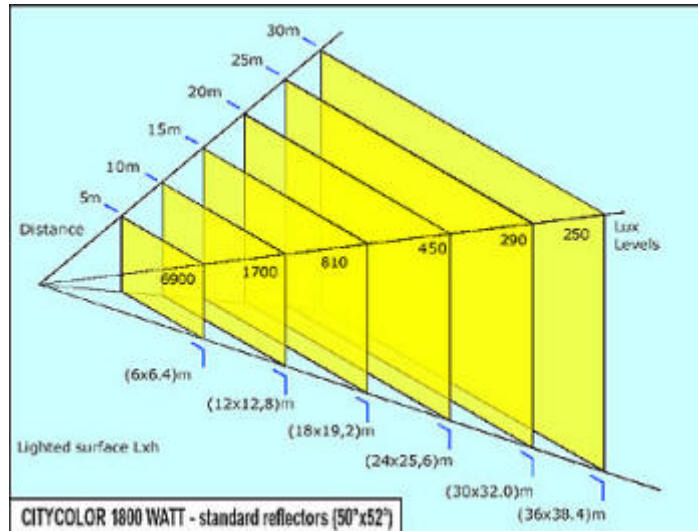


TECHNICAL SPECIFICATIONS

Lamp	MHN-SA 1800W; 2,500 hours average life; 5,600K color temperature; Luminous flux: 180,000 lumens
Color System	Full CYM color mixing, unlimited variety of colors and shades - High resolution stepper motors . - Color crossfades can be programmed at four different speeds or in real time
Dimmer	Mechanical dimmer 0% to 100%
Beam Angle	50x52 degrees (50% intensity)
Optics	New concept optical system patented that allows to concentrate all the luminous flux, so to use a dichroic color all the system in a flood light
Input System	USITT DMX 512 protocol Opto isolated input Local and remote motor reset Remote lamp switch on/off DMX address display Auto mode function - master slave with 64 internal preset
Safety System	Outside operation (weather proof) Double circuit breaker; disconnect the power in case of: a) Panel opening for lamp substitution - b) Defective cooling system. Meets and exceeds all international safety standards including LV-73/23 and 93/68 EEC; EMC 89/336 and 93/68 EEC
Power Supply	Rated voltage: 230 VAC or 208V (other voltages upon request) Rate frequency: 50 or 60 Hz Rated current: 10A Rated power: 2000W
IP Rating	IP54
Ballast	Magnetic ballast
Cooling Channels	Very quiet convection and forced cooling; Electrinically fan control to reduce noise
DMX Channels	Ch 1. Speed Ch 2: Cyan Ch 3: Yellow Ch 4: Magenta Ch 5: Dimmer Ch 6: Basic Colors + Rainbow

	Ch 7: Remote Reset/Lamp Switch off (optional)
Dimensions	w790 x d580 x h760mm(max 870mm); Up to 260 degrees head tilt
Weight	56 kgs
Patent (Pending)	VT98U 000001

PHOTOMETRIC DATA



Channel	DMX	%	Description
1 Mspeed	0-63	0-25	Mspeed 1 (Slowest)
	64-127	25-50	Mspeed 2
	128-191	50-75	Mspeed 3
	192-255	75-100	Mspeed 4 (Fastest)
2 Cyan	0-255	0-100	Open White to full Cyan
3 Magenta	0-255	0-100	Open White to full Magenta
4 Yellow	0-255	0-100	Open White to full Yellow
5 Dimmer	0-255	0-100	Close to Open
6 Color & Rainbow	0-25	0-10	Color Mix
	26-51	10-20	Cyan
	52-77	20-30	Yellow
	78-103	30-40	Magenta
	104-129	40-50	Blue
	130-155	50-60	Red
	156-181	60-70	Green
	182-207	70-80	Color Mix Slow
208-233	80-90	Color Mix Medium	
234-255	90-100	Color Mix Fast	
7 Control	0-127	0-50	Normal
	128-191	50-75	Fixture Reset
	192-250	75-98	Normal
	251-255	98-100	Lamp Off

DUE TO CONTINUOUS IMPROVEMENTS, SPECIFICATIONS MAY CHANGE WITHOUT PRIOR NOTICE.