



15-06 Morlot Avenue, Fair Lawn, NJ 07410 USA Tel: (201) 796-2690 Fax: (201) 796-8818

info@articulight.com

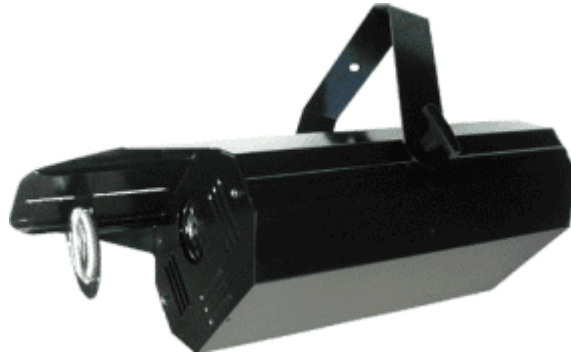
articulight@aol.com

www.articulight.com

GRAPHIC PROJECTORS

F25

Mega Power Modular Image Projector



The F25 is a newly developed mega power 2500w graphic projector making any surface communicate-day or night. It lets you place and rotate projected logos, text, visual or other images on any surface, at any time. Images can be changed instantly, or run in sequence and the projector can be programmed on the fly to achieve specific 'looks' and can be easily reprogrammed once a new 'look' is desired or a new campaign is launched all this thanks to the various modules and accessories.

The F25 is ideal for store fronts, window displays, POP displays, indoor advertising, or entertainment and hospitality venues. Corporations and franchises are discovering the marketing power of this projector, and how it can save time, cut costs, and project a strong image to capture consumer attention.

The F25 is the foundation of a new mass-market and POP marketing system that broadens creative options, improves efficiency, and lowers overall production costs. It can be used together with existing forms of POP advertising, display and promotional graphics - or replace them.

The F25 can help centralize or decentralize corporate advertising and promotional campaigns. Create a consistent message at several locations - or tailor art to suit specific needs.



SALES POINTS

- * One time hardware investment; low servicing costs
- * Increased return on advertising and promotional investment
- * Enables you to create the look you want, and change it easily and quickly.
- * Very user friendly, very easy to use
- * Custom metal, glass or dichroic gobos are optionally available according to customer requirements.



TECHNICAL SPECIFICATIONS

Power supply: 220-240V (50/60Hz), power supply cable included.
 Lamp: discharge HMI 2500, 240,000 lumens, 6,000 degree Kelvin color temperature, 500 hours life
 Optimal Projection distance: 9-150 m
 Media: Gobo Requirements: Outer Diameter: 50mm, Image Size: 40mm
 Focus: Manual
 Zoom: Manual, 20-40 degrees
 Dimensions: 600 L x 320 W x 220 H mm
 Weight: 40Kg
 IP Rating: 20 (A38, WATERPROOF COVER makes it suitable for outdoor use.

F25	F25 2500W PROJECTOR WITH BULB
A1	DMX IMAGE CHANGER
A2	DMX COLOR CHANGER
A3	CONTINUOUS COLOR CHANGER
A7	ROTATING GOBO MODULE
A10	FIRE EFFECT
A12	WATER EFFECT
A13	SNOW EFFECT

A14	PRISM
A20	COLOR DICHROIC FILTER
A22	FROST FILTER
A38	WATERPROOF COVER
A70	TELEOBJECTIVE 12 DEGREE LENS
A71	TELEOBJECTIVE 6 DEGREE LENS
A75	PHOTOGRAPHIC OBJECTIVE LENS 35 DEGREES
A77	PHOTOGRAPHIC OBJECTIVE LENS HIGH RESOLUTION 20 DEGREES
A78	PHOTOGRAPHIC OBJECTIVE LENS HIGH RESOLUTION 60 DEGREES
A79	PHOTOGRAPHIC OBJECTIVE LENS HIGH RESOLUTION 75 DEGREES
A80	PHOTOGRAPHIC OBJECTIVE LENS HIGH RESOLUTION 90 DEGREES
M39	FASTENING HOLDER FOR F12, F25

FEATURES AND BENEFITS

Large format projection
 Very high light output
 Crystal sharp vivid images
 Full color projection
 Complements and/or replaces other projection media
 Variable size images
 Projection in hard to reach and access places
 Day and night projection
 Programmable with accessories
 Very low cost image media
 Highly inexpensive advertising tool
 Multiple images and effects
 Highly innovative heat reduction management
 Quiet operation
 Rotating effects
 Color changing effects
 Special effects
 Variable lens options
 Safe
 Environment friendly
 Compact size
 Lightweight
 Portable
 Permanent or temporary use

APPLICATIONS

Indoor and Outdoor advertising
 Mall Advertising
 Retail Advertising
 Architectural Design
 Theatrical Scenic Design
 Concerts
 Performing Arts
 Conventions
 Trade Shows
 Promotional Events
 Special Events
 Corporate Events
 Product Launches
 Parties
 Film/Video Production
 Stadiums/Arenas
 Museums and Art Galleries
 Airports

Restaurants and Hotels
And much more

DUE TO CONTINUOUS IMPROVEMENTS, SPECIFICATIONS MAY CHANGE WITHOUT PRIOR NOTICE.