

# ARTICULIGHT

15-06 Morlot Avenue, Fair Lawn, NJ 07410 USA Tel: (201) 796-2690 Fax: (201) 796-8818

info@articulight.com

articulight@aol.com

www.articulight.com

## LIGHTING CONTROL SYSTEMS

---

CREATOR  
1024+



Advanced version of DMX CREATOR 1024 <http://articulight.com/cb/dmx1024/index.html>.

### PC-DMX Stand Alone controller:

- USB 2.0 Interface
- 1024 DMX channels out
- 512 DMX channels in
- Stand Alone mode
- Graphical Windows 98/ME/2000/XP/VISTA software.
  
- First USB-DMX512 interface worldwide providing 1024 channels of stand alone output!
- The easily preprogrammed show can be saved to an SD card in the interface (maximum 4 GB)
- 40 separate chases in Stand Alone mode, practically unlimited scene capacity. The scene capacity is not affected by the amount of channels used.
- Stand Alone input through MIDI, PS2 or digital I/O.
- Plays multiple chases simultaneously at different speeds in Stand Alone mode.
- DMXCreator1024+ set includes DMX512-interface box, 32 MB SD-card, USB cable and DMXCreator software and panels on CD.

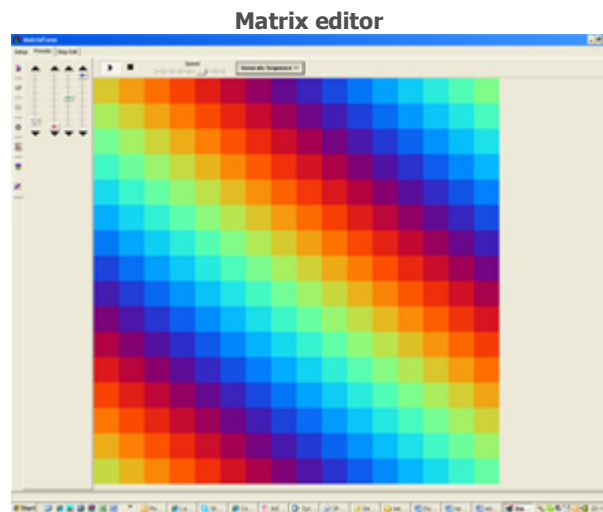




# SOFTWARE

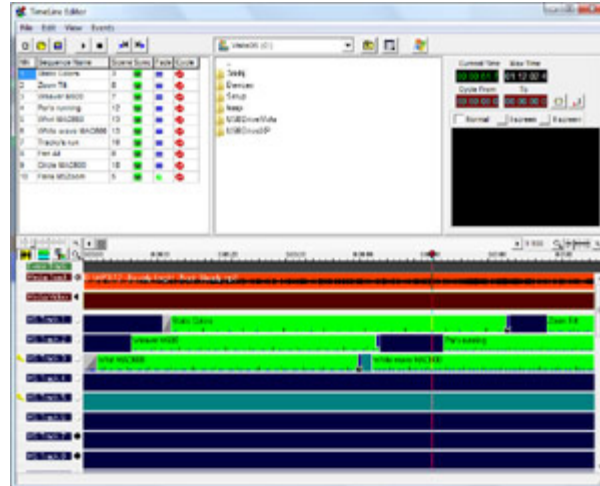
Our software has been continuously developed for more than a decade to provide intuitive solutions to complex lighting needs. Everything is visually based for easy access and understanding - With the purchase of a DMXCreator package, lifetime software updates are included in the price

- the software includes a massive fixture library which is constantly updated.



The Matrix Editor makes LED or fixture array programming easy. LED fixtures to be used can simply be dragged and dropped onto the matrix. Once this setup is complete, there are several different tools that make powerful effects programming simple and expedient. The Matrix Editor handles video as well as text scrolling and has other presets that are fully adjustable. Once the user is happy with the look, all there is left to do is to press on the "generate sequence" button, and finished!

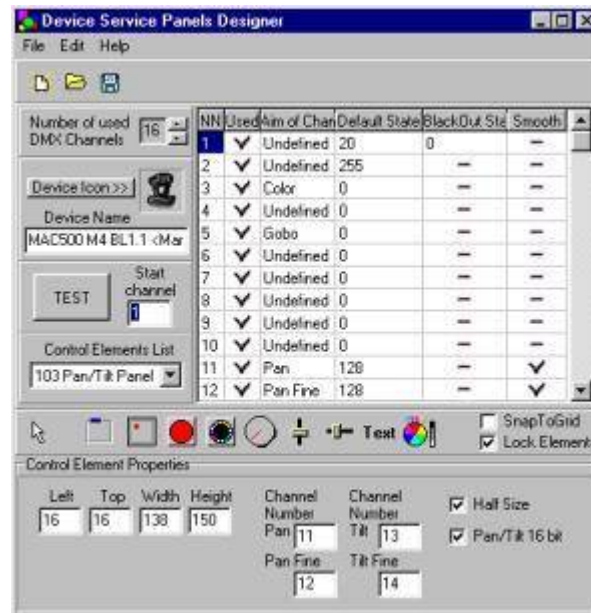
## Multimedia Timeline Editor



This is a great tool for programming and synchronizing complex or multimedia shows. To create a timeline, simply drag and drop your pre-programmed chases onto one of the 32 tracks and choose individual fade times or cross fade options. Media files can be added to the top two tracks, and represented in wave form for easy synchronization. For example, if you would like your light show to change at a particular point in the song, simply extend click on the chase on the time track and extend it to the desired length. Video files are output through the VGA port of the computer.

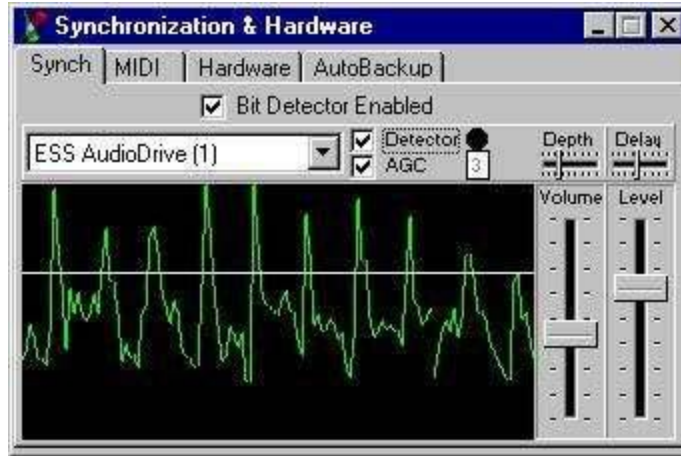
Each show can have up to 256 sequences, where each sequence can contain up to 16,384 scenes. The quantity of Show files is unlimited.

### Panel Designer



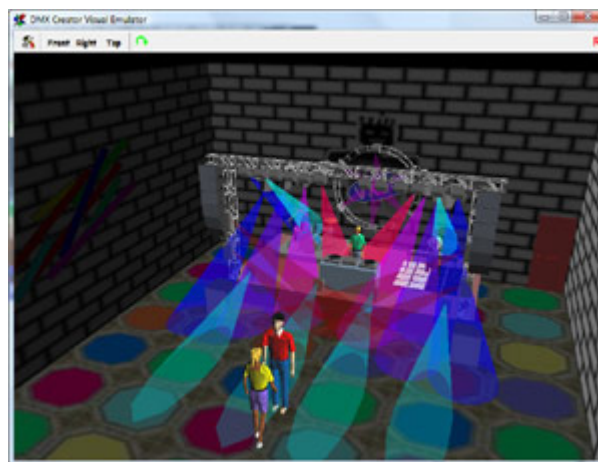
The library of fixture panels can be extended individually. The user is able to create, edit or download panels from our web site. Included "Panel Designer".

### Synchronization & Hardware

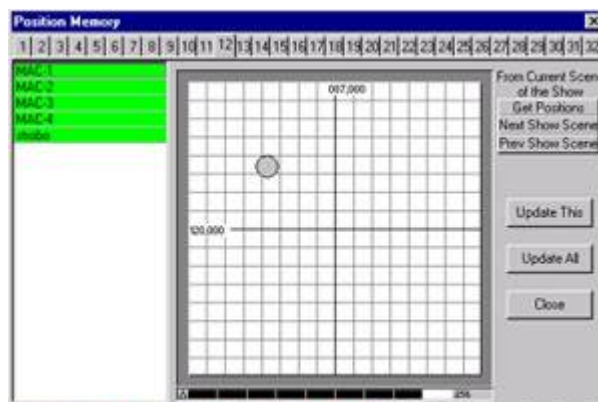


Sequence steps can get their trigger steps from the internal clock, a tap beat knob, internal master time track, external sound source or MIDI show control. Each show can have up to 256 sequences, where each sequence can contain up to 16,384 scenes. The quantity of Show files is unlimited.

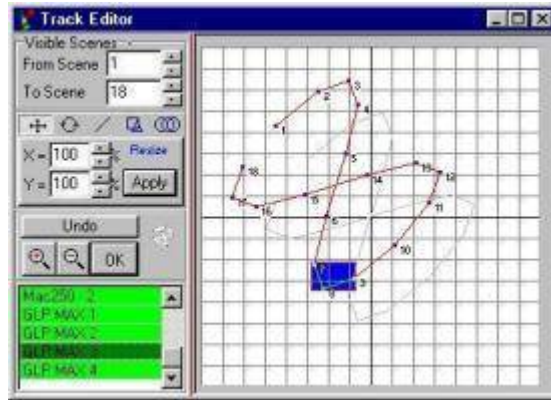
### Visual Emulator



The "Visual Emulator" creates a 3D view of your light show, even if no real fixtures are connected. The colored moving beams of the fixtures gives you the possibility to preprogram your show. Place environmental objects like truss, stages, DJ booths speaker boxes and many more. Import possibility for 3DS files







The "Track Editor" allows the user to display and manipulate the path of a scan beam. The "Sewing Machine" mode allows creating new scenes as points marked on this path.  
Track Editor



Create fixture groups for faster access multiple fixtures.

The final show can be remote controlled via the PC Midi input  
 Full control: Patch/Program change sets the desired Sequence (0-127), note on selects the scene within the sequence (0-127).  
 Sequence control: Patch/Program change or note on selects the sequence (0-127) and is running with the preprogrammed tempo mode and speed.  
 Midi start/stop commands are supported for start and stop of sequence.  
 supported OS  
 DMXCreator512Basic and DMXCreator1024+ interface (USB port): Microsoft Windows XP (SP2), Vista  
 DMXCreator512MK2 interface (Parallel port): Microsoft Windows XP (SP2)  
 Minimum system requirements of the computer:  
 IBM or compatible PC with Pentium processor 1Ghz  
 256MB Ram  
 30MB free harddisk space  
 Screen resolution 1024 x 768  
 One free printer port (bidirectional) for DMXCreator512MK2  
 One free USB port for DMXCreator512Basic and DMXCreator1024

DUE TO CONTINUOUS IMPROVEMENTS, SPECIFICATIONS MAY CHANGE WITHOUT PRIOR NOTICE.